



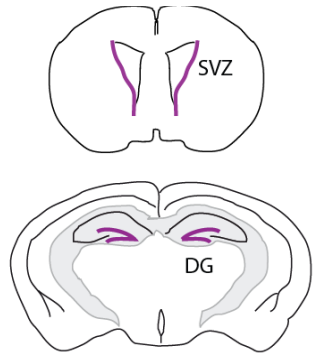
## Sara Xapelli, PhD

Instituto de Medicina Molecular  
Faculdade de Medicina da Universidade de Lisboa  
Portugal  
sxapelli@medicina.ulisboa.pt  
orcid.org/0000-0001-6854-250



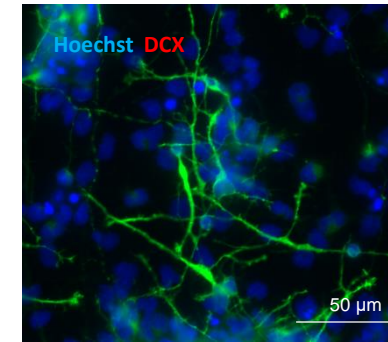
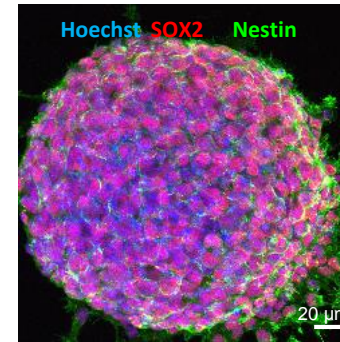
### Research areas:

- Neural Stem Cells and regenerative therapies
- Neurodegenerative disorders
- Neuropharmacology
- Cannabinoids, neurotrophic factors



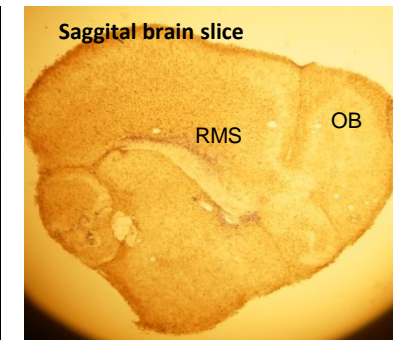
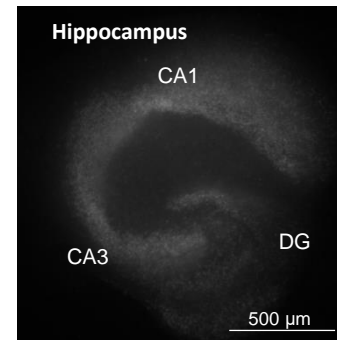
## *In vitro* model

Neurosphere culture system



## *Ex vivo* models

Organotypic slice cultures



## *In vivo* models

Models of epilepsy and multiple sclerosis

Stereotaxic surgeries

I.C.V. drug administration

Behavioral tests, imaging, histology

- To be part of an European network of researchers working in the development of stem cell trials for neurodegenerative diseases.
- To interact with other groups that study stem cells, exchanging protocols and discussing potential collaborations in the field of neuro-regeneration
- To work with groups developing biomaterials that may be used in brain repair strategies

Foreseen maximum contribution: **WG4**